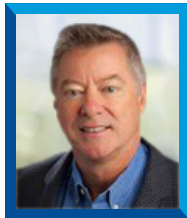


# KPMG U.S. Foundation, Inc.

## Board of Directors



**Anita V. Whitehead**  
Chair – KPMG U.S.  
Foundation, Inc.  
Principal, Tax  
McLean



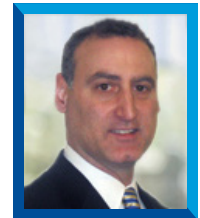
**Blane Ruschak**  
President – KPMG U.S.  
Foundation, Inc.



**Darren H. Burton**  
KPMG LLP Vice Chair –  
Human Resources  
Montvale



**Gabriel De La Rosa**  
KPMG LLP Partner –  
Audit  
Santa Clara



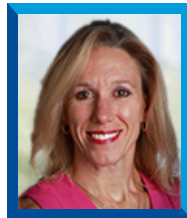
**David DiCristofaro**  
National Partner-  
in-charge  
Risk Management  
Advisory  
New York



**Maureen R. Evers-Wilcox**  
KPMG LLP Partner –  
Risk Management  
Office Managing Partner  
Long Island



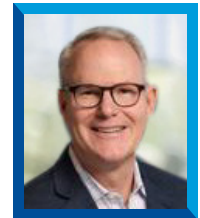
**Fiona M. Grandi**  
KPMG LLP  
National Managing  
Partner, I&ES  
San Francisco



**Christine M. Kachinsky**  
U.S Life Sciences Tax  
Industry Leader,  
Tax Practice Leader  
Short Hills



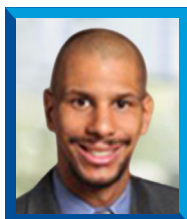
**Tracy K. Kenny**  
KPMG LLP  
Partner, Audit  
McLean



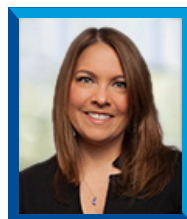
**James Powell**  
KPMG LLP Partner –  
Audit  
National Partner in  
Charge of Campus  
Recruiting,  
Office Managing Partner  
Nashville



**Robert T. Soles**  
KPMG LLP  
Partner, Advisory  
Chicago



**Derek W. Thomas**  
KPMG LLP  
Partner, Audit  
Washington



**Sandra B. Torchia**  
Service Group  
Leader, Risk  
Advisory Solutions  
New York