



KPMG U.S. Foundation, Inc.

Fiscal Year 2019



We know that education is the key to unlocking potential and strengthening societies. The KPMG U.S. Foundation works closely with KPMG LLP to help develop tomorrow's leaders by investing in transformative learning programs for all."



Blane Ruschak, President, KPMG U.S. Foundation, Inc.

OUR INVESTMENT

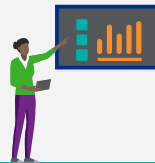
We foster systemic change in business, education and society. The investments we make have a far-reaching impact on business, higher education, diversity and community engagement.

THE PHD PROJECT CELEBRATES 25 YEARS

Created in 1994 to increase the number of Black/ African American, Latinx/Hispanic American and Native American faculty who serve as role models and mentors to the next generation of diverse business leaders

From 1994 through 2019

500% increase in minority business school professors



90% of PhD Project doctoral students defend their dissertations

96% of PhD Project members remain in academia

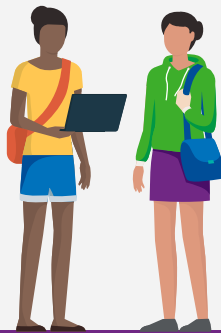
EDUCATION

KPMG U.S. Foundation, Inc. aligns with the focus of KPMG LLP on developing the next generation of leaders through a long-term strategic investment in lifelong learning

- KPMG Family for Literacy
- Junior Achievement
- NAF
- Girls Who Code
- Enactus

\$250K to support JA Finance Park

\$250K to support NAF Finance Academies



MATCHING GIFT PROGRAM

KPMG U.S. Foundation, Inc. supports colleges and university initiatives including faculty research, curriculum development, and student scholarships.

543 Higher Education institutions that received matching gifts

\$10.8M+ contributions by partners/ employees to universities (includes gifts made directly to the university and Foundation match)

KPMG PROFESSORSHIPS

The KPMG Foundation acknowledges the central role faculty play in the academic process through the creation of KPMG Professorships.

established at **50** universities



BETA ALPHA PSI

KPMG U.S. Foundation, Inc. is the largest funder of Beta Alpha Psi (BAP), an international honors organization for accounting, finance, and information systems for students and professionals. Every year \$160,000 is provided to support chapter scholarships, local KFFL reading events, and "International Day of Literacy," an annual Community Service Day event focused on literacy and food insecurity. The event is done in partnership with the KPMG Community Impact team.

906 volunteers

794 children participated in literacy events at seven locations

1,847 books donated

103,680 meals packaged during Pack Shack Funnel Party



KPMG DISASTER RELIEF FUND

Funds raised assist KPMG Employees who suffer permanent financial loss resulting from a natural disaster and supports organizations providing direct relief to impacted communities.

\$182K donor gifts (this includes match from KPMG LLP)

